	Title:	Artwork/Print Specification	Process/Doc No:	F083
			Revision:	03
	Area:	Customer	Process/Doc Owner:	R.Pope
			Release Date:	11.03.2022

## Artwork

- Artwork should be produced using an approved Curtis Packaging CAD specification grid. These can be supplied via e-mail as an AI, Artpro, PDF or EPS file scale 1:1.
- All print bleeds (3mm), ink/varnish free areas must conform to the areas marked on the approved Curtis Packaging lay down grid.
- Font sizes should not be less than 5pt.
- Images should be CMYK with resolutions no less than 300dpi.
- Maximum ink coverage 320%.

## Emboss Artwork Requirements

Emboss files cannot be “view only” files. Specification requirements are Adobe Illustrator EPS with vectorized images and no embedded Tiff images. This is to ensure the emboss quality is of the highest standard.

## Chokes and Spreads

No chokes or spreads are required on the digital artwork. Our internal processes will make any necessary amendments required for printing.

## Colour Profiles

Please ensure there are no colour profiles applied within PDFs. If a specific colour profile is required, please notify Curtis Packaging on artwork delivery.

## Supplying Files


Digital artwork can be received by Curtis Packaging via;

- FTP, our preferred method. Site login details are available upon request.

## File Formats and Required Elements

**Artwork files should be supplied as high resolution PDFs** - We can accept other file formats if a PDF can't be supplied. Please follow the guidelines below for native file formats.

- All fonts including the “core set” that have been used in the creation of the file must be included. Fonts for embedded EPS files must also be included.
- In the ‘page set up’ dialogue box, substitute fonts should be disabled.
- The job should be within a folder and identified accordingly with title and key information.

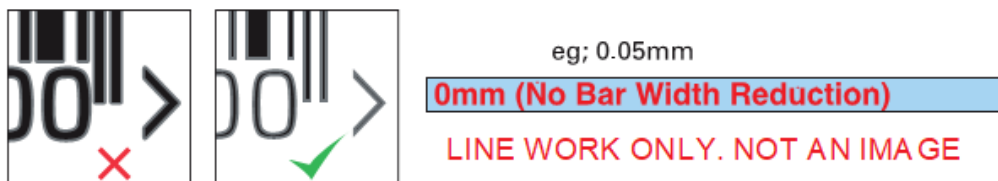
	Title:	Artwork/Print Specification	Process/Doc No:	F083
	Area:	Customer	Revision:	03
			Process/Doc Owner:	R.Pope
			Release Date:	11.03.2022

## Barcodes

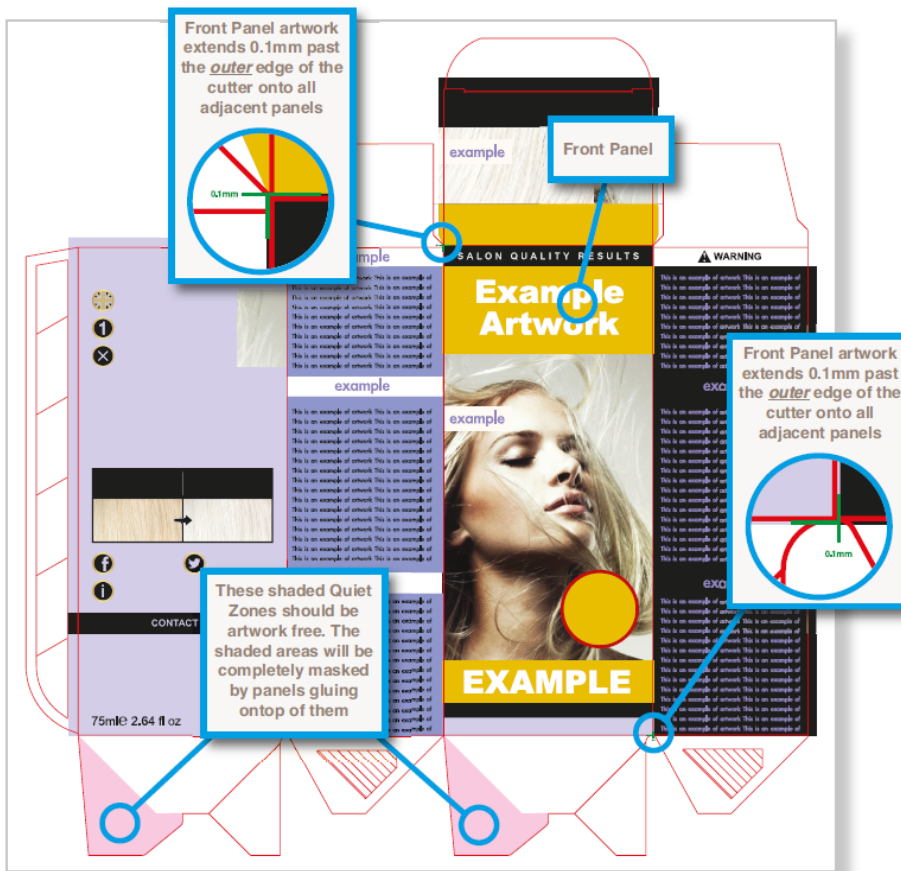
### Our barcode magnification



### Our barcode bar width reduction (To allow for the ink spreading)



## Carton Artwork Guidelines



### Front Panel

When creating the front panel, artwork should 'bleed' by 0.1mm from the outer edge of the cutter onto any adjacent panel, in this example, the top, bottom left & right panels. This is specific to the front panel only.

### Crash-Lock Base

When artworking for a crash-lock carton, artwork such as barcodes should not be placed in the 'Quiet Zones' illustrated on the example to the left. These shaded areas will be completely masked by panels gluing on top of them when the carton is constructed.

If you require any further assistance, then please contact your customer service representative